

ROOTED TOGETHER

outside

IMPACT REPORT
2022-2023





MISSION

To foster a love of the land in Sonoma County.

LAND ACKNOWLEDGMENT

The preserves, community gardens, and main office stewarded by LandPaths are located on the ancestral territories of the Southern Pomo, Coast Miwok, Mishewal peoples, and the Dry Creek Rancheria Band of Pomo Indians, past, present, and future.

We recognize them as the first people and the first stewards of these lands. We are on occupied territory and acknowledge the ongoing devastation of colonization.

This land acknowledgment is the first step in LandPaths' long journey to repair our relationship with the original people of this land. And to respect, make space, and honor the knowledge, culture, and deep connection to the natural world of Indigenous people in Sonoma County.

Join us in this process by connecting with and uplifting Native-led organizations and resources, which is a way for all of us to start on a course of reparative study and action.

To read our entire land acknowledgment, go to: landpaths.org/mission-statement-and-values.

A MUIR'S HAIRSTREAK BUTTERFLY (CALLOPHRYS MUIRI) AT BOHEMIA ECOLOGICAL PRESERVE. PHOTO ON THIS PAGE AND LARGE PHOTO ON FRONT COVER TAKEN BY EMMALINE JONES.

Dear Friends,

As we pen this letter, the LandPaths' Harvest Festival and the harvest moon remain in our mind's eyes. And it feels like the perfect moment to take stock of – or harvest, if you will – our successes and note the community roots that made them possible this last fiscal year.

Before we do that, to each and every one of you reading these words, thank you. Your participation, whether through volunteering, donating or both, has made LandPaths more resilient, adaptable, and able to boldly face any new challenge that may come. And by boldly facing, we mean finding and creating possibilities for joy and hope while human-caused climate disruption wreaks havoc on all of nature, wild and human.

The Year's Accomplishments

The following pages illuminate the deep roots of our work together. You'll read about how we reached more youth thanks to a generous land partner, Duckworth Farm. Your outspoken support for our LGBTQI+ youth and allies camps and river treks gave us courage to withstand social media pressure from naysayers. And docents have grown our capacity to advance access at one of the most embattled open spaces in Sonoma County. Plus, we increased our investment in tools, like good fire and grazing, which are stewardship techniques practiced by the first peoples to tend the land since time immemorial.

These successes demonstrate how LandPaths expresses and amplifies community held values, bringing courage and focus for transformative change. We understand that land stewardship is tied to community stewardship, that environmental education connects to overall educational success, and that access is much more than new trails and opened gates. LandPaths has evolved to understand that equity, inclusion, and justice are inseparable from our mission. And we thank you for supporting our commitment to advancing this crucial work.

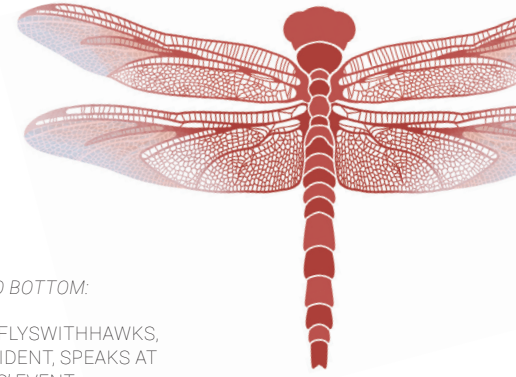
Growing Interconnection

Through it all, we remain optimistic about the power of fostering a love of the land. The growing collection of people and partners, like you, are like trees that appear isolated. And yet, scientists have confirmed, *they are deeply interconnected and communicating through subsurface root systems and mycelium, for the health and well-being of the whole.*

We give appreciation for the year that has passed and the work ahead. Thank you for sharing this path with us.

Sincerely,

Dr. Brenda Flyswithhawks, Board President
Lee Hackeling, Executive Director of Operations
Craig Anderson, Executive Director of External Affairs



FROM TOP TO BOTTOM:

DR. BRENDA FLYSWITHHAWKS, BOARD PRESIDENT, SPEAKS AT A LANDPATHS' EVENT.

LEE HACKELING, EXECUTIVE DIRECTOR OF OPERATIONS (MIDDLE), AT BOHEMIA ECOLOGICAL PRESERVE WITH FORMER BOARD MEMBERS ELOISA COLIN (LEFT) AND BETH WYATT (RIGHT).

CRAIG ANDERSON, EXECUTIVE DIRECTOR OF COMMUNITY RELATIONS, (IN THE MIDDLE WITH THE BANJO) PERFORMS WITH SOLORIO AT THE 2023 ROCKIN' THE RANCH EVENT.





connecting kids with the land



IT WAS LATE WINTER AND STUDENTS FROM RIDGWAY HIGH SCHOOL WERE HARVESTING MINER'S LETTUCE ALONG A FORESTED TRAIL ABOVE DUCKWORTH FAMILY FARM.

"Wow, that's beautiful!" said one of the students from the continuation high school in Santa Rosa, admiring the expansive view of the farm below. The wild lettuce forage was one of many highlights of the field trip, which also included a lesson on weaving local fibers on an antique loom with Farmer Lorri Duckworth, and quiet nature time in their chosen sit spots.

"I was just chilling next to a bird, and it was really nice," said Savon who was usually more interested in skateboarding than birdwatching. The field trip was just one of many weeks of school programs that took place this year at Duckworth Farm, our newest land partner.

Protected by an easement from Sonoma County Ag & Open Space, the farm has swiftly become a well-loved site for In Our Own Backyard

environmental education and Inspired Forward field trips during the school year. Over the summer, Owl Campers from the Santa Rosa City School District arrived by bus and delighted in hours spent in nature buoyed by new friends and trusted adult mentors.

During these immersive outdoor experiences, youth who might not otherwise get access to nature in this way, explored the water critters in Blucher Creek, played games of tag in the fields, and ate ice cream made from blueberries grown on the land! As you might imagine, this last activity is perennially popular and leaves kids clamoring to return.

In addition to Lorri and Oscar Duckworth, we thank all of our land partners: Susan and Lou Preston at Preston Farm, Will and Julie Parish at Bohemia Ecological Preserve, and Jim and Betty Doerksen at Rancho Mark West. By sharing their land, they all make it possible for LandPaths to connect youth with local nearby open spaces, nurturing generations of future earth stewards!



CLOCKWISE FROM TOP:

STUDENTS FROM LUTHER BURBANK ELEMENTARY SCHOOL HARVEST CARROTS DURING AN IOOBY FIELD TRIP AT BAYER FARM, ONE OF FOUR THEY'LL TAKE OVER THE SCHOOL YEAR.

OWL CAMPERS PLAY GAMES IN A FIELD AT PRESTON FARM IN HEALDSBURG'S DRY CREEK VALLEY.

VIOLET, A TEEN VOLUNTEER, WEARS THE PRIDE FLAG DURING CAMP TRILLIUM AT BOHEMIA ECOLOGICAL PRESERVE.

our year by the NUMBERS

2,640
YOUTH IMMERSSED
IN NATURE

58%
OF CAMPERS RECEIVED
A SCHOLARSHIP,
EXCEEDING OUR
GOAL OF 50%

87→668
GROWTH IN CAMPERS
BETWEEN 2012-2022

"It's like bringing all youth who feel alone together in one place where they belong."

— Camper at Camp Trillium, our day camp for LGBTQI+ youth and allies



expanding access to **nature**

ON A CLEAR MORNING IN MAY, LARRY MODELL — A VOLUNTEER DOCENT WITH LANDPATHS — LED A GROUP OF PEOPLE ALONG the trails at Lafferty Ranch. Owned by the City of Petaluma, the historic park was finally made accessible to the public in 2022 through outings like these. An awe-inspiring view of the Petaluma valley across the San Francisco skyline was a worthy reward after the uphill trek.

“I look up at this mountain every day,” one participant said afterwards. “It was so nice to be able to explore it at last.”

Many people worked for decades to open access to Lafferty Ranch, the sole open space preserve on the east side of Petaluma. We are proud to be part

of that legacy, enabling people who live nearby to explore the property, learning about its fascinating ecological history, and gaining a green space from which to gain rest and respite from the bustle of the city. In addition to docent outings, we’ve also offered Spanish language outings at Lafferty with Vamos Afuera con LandPaths.

“These outings allow hundreds more people to know and love that property, fostering the love needed to sustain the effort to open it fully as a park,” says Larry. “And looked at broadly, such constituency building for public lands and open space are an important byproduct of LandPaths’ work, and one that we should all support.”

“It’s my first-time kayaking. I couldn’t do this without organizations like you.”

— Vamos Afuera participant

CLOCKWISE FROM TOP:

A SPRING LAKE VILLAGE RESIDENT ENJOYS AN EASY RAMBLE AT BOHEMIA ECOLOGICAL PRESERVE.

A FAMILY ENJOYS A DIP IN THE MERCED RIVER DURING THE 6TH ANNUAL VAMOS A YOSEMITE TRIP.

AS PER USUAL, THE WONDERFUL VOLUNTEERS AT BAYER FARM MADE DAY OF THE CHILD A SUCCESS.



our year by the **NUMBERS**

323

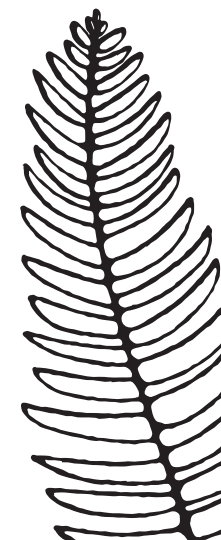
OUTINGS & ACTIVITIES THAT CONNECTED PEOPLE WITH NATURE & EACH OTHER

189

LONGEST WAIT LIST FOR AN OUTING

127

FAMILIES GROWING FOOD AND EATING FROM OUR COMMUNITY GARDENS AT BAYER FARM AND JEFF’S GARDEN AT ANDY’S UNITY PARK IN SANTA ROSA



forging

a new way
with old tools



IN NOVEMBER 2022, FIRE WAS GENTLY INTRODUCED BACK TO THE LAND AT LANDPATHS' GROVE OF OLD TREES. THE 12-acre controlled burn was conducted by Audubon Canyon Ranch's Fire Forward program, in partnership with LandPaths' stewardship staff and volunteers, to support the ecological health of the redwoods and reduce potentially hazardous wildfire fuels in the understory.

Five months later, grazing was reintroduced to the land at Ocean Song/Myers Preserve. The return of cows is thanks to a robust partnership with True Grass Farms with the goal of reducing coastal shrub encroachment while revitalizing existing grasslands.

Prescribed fire and grazing are old, proven tools for keeping coastal prairies and forests vibrant and healthy. In fact, the grasses, trees, and wildlife that make their home here have evolved

with fire and grazing. Some are even dependent on regular cycles of one or the other, or both, to thrive.

As human-caused climate disruption triggers dramatic changes to the functioning of the earth's ecological systems with often devastating impacts on vulnerable communities, LandPaths has committed to caring for the land based in close attention to what the grasslands, woodlands, waterways, and forests need for improved health and ecology.

And we depend on participants like you to deepen the impact of that work — whether it's as a volunteer with our wildlife camera program or the commitment to spend a few hours of pulling invasive French broom at a preserve or donating to ensure we can continue to care for the land and each other. In truth, steadily widening the circle is essential when it comes to growing community with nature.

CLOCKWISE FROM TOP:

OUR SPRING 2023 YOUNG STEWARDS COHORT TAKES A BREAK FROM STUDYING LOCAL ECOLOGY AND LAND STEWARDSHIP APPROACHES AT OCEAN SONG/MYERS PRESERVE.

PRESCRIBED FIRE MANAGERS FROM FIRE FORWARD, A PROGRAM OF AUDUBON CANYON RANCH, WORKED IN PARTNERSHIP WITH LANDPATHS TO BRING GOOD FIRE BACK TO THE GROVE OF OLD TREES IN NOVEMBER 2022.

A MOUNTAIN LION RAMBLES THROUGH RIDDELL PRESERVE AS SEEN THROUGH ONE OF THE CAMERAS IN OUR REVIVED WILDLIFE CAMERA PROGRAM.

VOLUNTEER STEWARDS COUNT INSECTS IN THE NATIVE GRASSLANDS AT BOHEMIA ECOLOGICAL PRESERVE, AS PART OF A STATEWIDE INSECT POLLINATOR COMMUNITY SCIENCE BLITZ.



our year by the NUMBERS

130

NEW VOLUNTEERS

2,520

ACRES STEWARDED

234

TREES SURVEYED FOR SUDDEN OAK DEATH DURING OUR COMMUNITY SCIENCE BLITZ AT BOHEMIA ECOLOGICAL PRESERVE



“Volunteering with LandPaths has challenged me in how I think about the land. It's comforting to be surrounded by people wrestling with the same questions: How can we better take care of each other? How can we better take care of our home?”

— Calvin Howell, 2023 Intern





caring for the land with corporate and community partners

“LandPaths is truly a leader in community stewardship and conservation, and we are humbled to have been working with them for many years. Through volunteer initiatives, like redwood planting after wildfires, as well as community support, such as feeding local families with community plots, we’ve seen firsthand their commitment to people-powered sustainability and regeneration of local land.”

— Kaitlin Garzini, Guayakí Yerba Mate

LandPaths also thanks: Credo High School, Healdsburg Rotary Club, IDEX Corp, Jackson Family Wines, Oliver’s Market, Redwood Credit Union, REI, St. Francis Winery, Sonoma Academy, Summit Engineering, Vanguard Sonoma, Willow Creek Wealth Management.



CLOCKWISE FROM TOP:

A LARGE GROUP OF EMPLOYEES FROM GUAYAKI YERBA MATE STAND ON THE BRIDGE NEAR THE REDWOOD GROVE AT RANCHO MARK WEST. THE TASK FOR THE DAY WAS WATERING REDWOOD SAPLINGS THAT WERE PLANTED AFTER THE GLASS FIRE SWEEPED THROUGH THE PRESERVE IN 2021.

A TEAM FROM KEYSIGHT AT LANDPATHS’ BAYER FARM DURING A GIVE BACK VOLUNTEER WORKDAY.

A TRADITIONAL MEDICINALS TEAM AT BOHEMIA ECOLOGICAL PRESERVE WITH SENIOR STEWARDSHIP FIELD SPECIALIST BENJAMIN BRAVO. THE TASK FOR THE DAY WAS PULLING YELLOW STAR THISTLE, AN INVASIVE PLANT THAT CAN DAMAGE THE HEALTH OF COASTAL GRASSLANDS.



HOW DID YOU FIRST CONNECT WITH LANDPATHS?

LandPaths is an organization I was not aware of 10 years ago. When my older son turned 8, I began exploring programs that would be of interest for him during the summer months. It was then that I became aware of the work LandPaths did to encourage youth to spend time outdoors and connect with nature.

WHY DID YOU DECIDE TO START VOLUNTEERING WITH LANDPATHS?

In 2018, when my daughter turned four, I attended a volunteer training. The program lead was quick in figuring out our strengths and made us feel like valued members of the team. LandPaths strives to serve various populations in our community, including people from marginalized groups. As a result, this organization recognizes that they need the support of volunteers from different backgrounds and abilities because they want as much as possible to meet the needs of every participant and provide a sense of inclusiveness and belonging.

For the last few years, I’ve volunteered every summer to help in different capacities with camps. I support the core team with material preparation, drive carpool, and help make camp a fun, nature-immersive experience for campers.

DO YOU HAVE ANY FAVORITE MOMENTS FROM BEING A VOLUNTEER?

Both of my children participate in LandPaths’ youth/teen programs. My daughter who’s now 9, is an enthusiastic camper at Owl Camp. Her favorite place to visit every year is Rancho Mark West. My son, now 18 and an avid kayaker, asks every year to be part of the Russian River Teen Trek, through which he’s gained a special appreciation for river.

HAS YOUR CONNECTION TO NATURE IN SONOMA COUNTY AND/OR SENSE OF BELONGING IN NATURE GROWN OR DEEPENED BECAUSE OF YOUR PARTICIPATION WITH LANDPATHS?

Seeing how children, including my own, gain an appreciation for the outdoors is something that encourages me to be involved in and support this organization. Spending time in the outdoors, whether biking, hiking, journaling or camping and connecting with nature, through LandPaths and other organizations, has become a tradition for our family.

WHAT MIGHT YOU TELL SOMEONE WHO IS INTERESTED IN VOLUNTEERING WITH LANDPATHS?

The benefits of being a volunteer are many. It’s an opportunity to give back to my community and support LandPaths’ goal of increasing access to the outdoors for all members of our community. In addition, through my years volunteering with LandPaths, I’ve formed a special bond with the places I get to visit and the people I work with. I truly value LandPaths’ presence in our community

why i give
claudia leiva



A special thank you to Beth Wyatt, who served three terms on LandPaths' Board of Directors. Beth joined the Board in 2014 and finished her final term in June 2023. Beth has been selfless in her support for our mission. From participating on the planning committee and serving up food at our volunteer appreciation party to talking up Owl Camp in line at the grocery store, Beth's dedication, generosity, and impact on our mission and values has been remarkable.

Tim Choate also went above and beyond as a volunteer, serving three terms as a Board Director until mid-2023. We appreciate them both immensely!

In addition, many thanks to Eloisa Colin, Kimi Barbosa, and Belén Lopez Grady for generously volunteering their time in 2022–2023.

BOARD OF DIRECTORS

- Dr. Brenda Flyswithhawks, *President*
- Hilda Shum, *Vice President*
- Craig Hazel, *Treasurer*
- Catie Clune, *Secretary*
- Brijida "Brigit" Alemán, *Director*
- Adam Kahn, *Director*
- Greg Skopp, *Director*
- Brad Sunshine, *Director*



staff



STAFF

- Craig Anderson, *Executive Director of External Affairs*
- Cynthia Beutelspacher, *Senior Bilingual Outreach Specialist*
- Benjamin Bravo, *Senior Stewardship Field Specialist*
- Jonathan Bravo, *Bilingual Garden Specialist*
- Lesly Caballero, *Senior Bilingual Education Specialist*
- Miranda Carreño, *Bilingual Outings Field Specialist*
- Christie Clark, *Environmental Education Pathways Lead*
- Leilani Clark, *Communications Lead*
- Mineaux Gray, *Education Field Specialist*
- Lee Hackeling, *Executive Director of Operations*
- Jessica Holloway, *Education Programs Lead*
- Jessica Jones, *IT & Database Lead*
- CJ Kow, *Education Field Specialist*
- Steven La Gatta, *Facilities Lead*
- Roxy Layden, *Outings Field Specialist*
- Erin Mulligan, *Ocean Song Steward*
- Lara O'Herlihy, *Stewardship Field Specialist*
- Jackie Peña, *Bilingual Education Field Specialist*
- Sheridan Rapolla, *Finance & Administration Director*
- Laura Revilla, *Volunteer & Community Hub Lead*
- Carlos Rivas, *Bilingual Education Field Specialist*
- Miles Sarvis-Wilburn, *Stewardship Field Specialist*
- Eric Singer, *Development Manager*

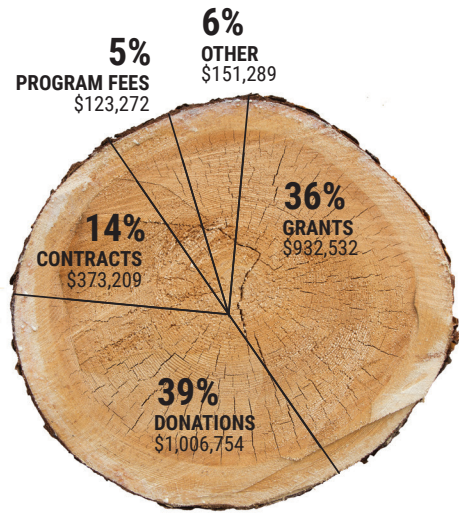
Many thanks to: Tara Cornelisse, Benji Dambach, Omar Gallardo, Tona Knoop, Jamie Nakama, and Angelica Steinman.



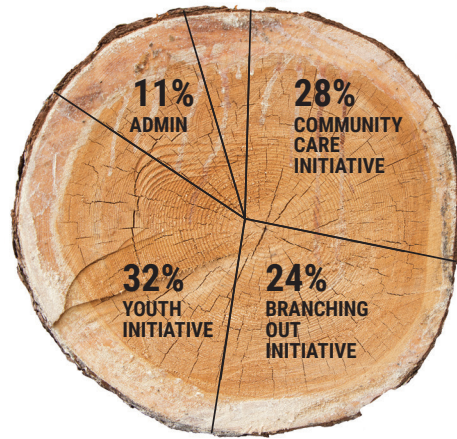
financials FY2022/23

REVENUE

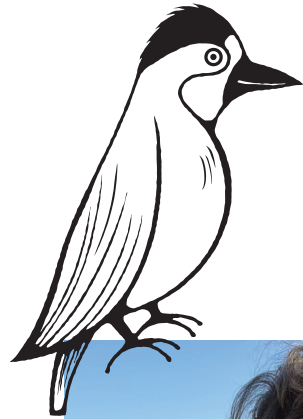
LANDPATHS RECOGNIZED
AN ADDITIONAL \$283,505
IN UNREALIZED GAINS



5% FUNDRAISING



EXPENSES



HOW DID YOU FIRST GET INVOLVED WITH LANDPATHS?

I like to be generous with the organizations I believe in. When I moved to Sonoma County eight years ago, I found LandPaths online and was attracted to the mission, the programs, and particularly the offerings for youth. LandPaths' youth programs are meaningful, relevant, and stand out. I feel that having the privilege of having resources comes with the responsibility of sharing them.

WHY DO YOU CHOOSE TO SUPPORT LANDPATHS MONTHLY AND WITH YOUR LEGACY GIFT?

I like all the aspects of LandPaths' work, including the work on the preserves, the work with youth, the programs at Bayer Farm and even the work you do in your offices. I like that the organization is well-run and local and features a collection of fine minds. LandPaths is practical and does the right thing.

And I am particularly interested in connecting youth with the land. Choosing LandPaths for a legacy gift goes a long way to ensure that Sonoma County's children will learn to value the land and learn to care for it during their lives.

WHAT ARE YOUR HOPES FOR THE OUTCOME OF YOUR LEGACY GIFT?

By giving LandPaths a large financial gift at the time of my death, my legacy becomes their legacy to the land and the children of Sonoma County. My goals are to help finance and grow the organization, to teach the school children of Sonoma County about nature in the classroom and outside, to provide funds for land acquisition as needed to build on protected open spaces, and to support the organization so it may thrive going forward.

why i give
stephanie reed

interconnected with community partners

Our name stands for **Land Partners Through Stewardship** and the organizations, businesses, and governmental agencies listed here have been key to our capacity to make a positive impact in Sonoma County.



Redwood Empire Food Bank • Sonoma County Library • Positive Images • Sonoma County Water

meet **nicole jones** illustrator



Nicole Jones is a Sonoma County-based artist who works with both digital and traditional materials. She created all of the illustrations that you see throughout this Impact Report of local flora and fauna that live at the preserves stewarded by LandPaths. Her work is inspired by her Southern Pomo culture and California native plants and animals. LandPaths is incredibly excited to have commissioned Nicole for a series of stunningly beautiful, framed prints that keep the atmosphere of our downtown Santa Rosa office alive with images of the natural world that we love so much.



GET OUTSIDE

Root your child in nature with a camp, teen trek, or school program.

Volunteer at Owl Camp, Camp Trillium, Teen River Trek, or Paddle with Pride.

Care for the land and connect with community on a volunteer stewardship day.

Sign up for an outing in English or Spanish.

Become a gardener at Bayer Farm or Jeff Bodwin Community Garden.

Between the age of 16–20? Gain **hands-on** work experience as a Young Steward.

Connect people with the land as a LandPaths' docent.

Partner with us through your district, business, or community organization.

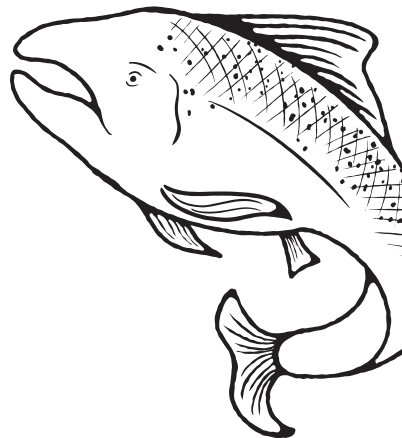
Explore more at landpaths.org.

GIVE

Our work is empowered by your generous support. And our impact is only possible through your continued investment. To make a gift please scan the QR code or go to landpaths.org/ways-to-give. If you



have any questions or need assistance, please contact Eric Singer at 707-544-7284 ext.106 or erics@landpaths.org. Thank you!



CONNECT

Follow us on Facebook, Instagram, LinkedIn & TikTok

Subscribe to our YouTube Channel **@LandPathsOfficial**

Sign up to receive our bimonthly eblast at landpaths.org

LandPaths
618 4th Street, #217
Santa Rosa, CA. 95404
(707) 544-7284 ext. 100
outings@landpaths.org



@LandPaths

