



LandPaths

spring.summer
2024

ZINE



EASY WAYS TO CONNECT KIDS TO NATURE
TREASURES OF THE FOREST FLOOR
CREATIVE STEWARDSHIP OPPORTUNITIES
UPCOMING CALENDAR
AND MUCH MORE!



HELLO
MY MISSION IS

To foster a
love of the land
in Sonoma County

IDENTITY STATEMENT

At LandPaths, equity, inclusion, and justice are inseparable from our mission and values. We recognize that historically marginalized, and especially communities of color, confront systemic barriers to connecting with nature. As a leader in public access, land stewardship, and environmental education, we are dedicated to action grounded in self-reflection and in listening to community voices, ideas, and solutions.

LAND ACKNOWLEDGEMENT

Our community gardens, office, and preserves throughout Sonoma County are located on the ancestral homelands of the Southern Pomo, Coast Miwok, Dry Creek Rancheria Band of Pomo Indians, and Mishewal people, past, present, and future. We recognize them as the first people and the first stewards of this land. We are on occupied territory and acknowledge the ongoing devastation of colonization.

This land acknowledgement is the first step in LandPaths' long journey to repairing our relationship with the original people of this land, and to respect, make space for, and honor the knowledge, culture, and deep connection to the natural world of Indigenous people.

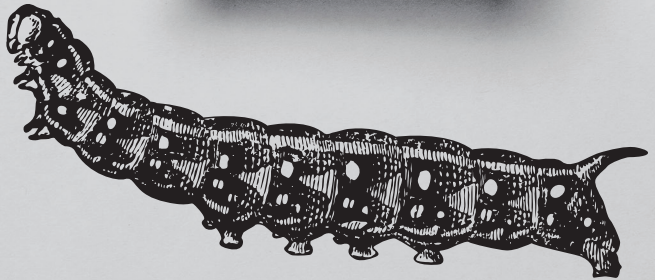
ABOUT LANDPATHS

LandPaths is an environmental education and conservation leader with the mission to foster a love of the land in Sonoma County. We believe everyone should have access to the awe and inspiration of nature.

Annually, we engage thousands of people in joyful relationships with nature. We do this mainly through creative outings led in both English and Spanish, environmental education, nature camps, and caring for the land on preserves and community gardens stewarded by LandPaths.

CONTENTS

- 2 Mission, Identity Statement, Land Acknowledgment
- 3 Table of Contents
- 4 Map of Preserves and Partner Properties
- 6 Calendar
- 9 Partner Opportunities
- 10 Tending Together: Community Stewardship and You
- 12 Go Go Gardens
- 14 Happy Birthday, Vamos Afuera
- 16 Seven Easy Ways to Connect Kids with Nature
- 18 Wild Treasures of the Forest Floor



CONNECT WITH US



@LandPaths



@LandPathsOfficial



Get our bimonthly digital newsletter delivered to your inbox! Subscribe at landpaths.org or scan the QR code.

LandPaths
618 4th Street, #217, Santa Rosa
(707) 544-7284
outings@landpaths.org



PRESERVE, GARDEN, AND PARTNER PROPERTY LOCATIONS



Step outside into the beauty of this place we call home this spring and summer! There are so many ways to participate, including outings in English and Spanish, opportunities to care for the land (aka stewardship), teen river treks, nature camps, garden days, bilingual read-alouds, and so much more. Explore our Calendar and then sign up at landpaths.org > Calendar or scan the QR code!





APRIL

- 4/1 Let's Read Outside *Bayer Farm*
- 4/2 Farming for Health/ Cosechando para la Salud *Bayer Farm*
- 4/5 Tend the Land Together *Ocean Song/Myers Preserve*
- 4/6&7 Self-Guided Adventure *Rancho Mark West*
- 4/6 Tend Trails *Rancho Mark West*
- 4/11 Tend the Land Together *Ocean Song/Myers Preserve*
- 4/12 Help Out with Burn Piles *Grove of Old Trees*
Hut Hill Hootenanny with Special Musical Guests *Bohemia Ecological Preserve*
- 4/13 Nature & Wellness Hike *Lafferty Ranch*
Branch Out with Wildflowers *Riddell Preserve*
Vamos Afuera: Explorando la vida costera a Sonoma Coast
- 4/14 Volunteer Appreciation Party *Rancho Mark West*
- 4/16-18 Spurge Purge Stewardship Week *Ocean Song/Myers Preserve*
- 4/19 Let's Pull Broom *Fitch Mountain*
- 4/20 Branch Out with Nature Vogue (LGBTQ+ and allies) *Myers Preserve*
Spring Wildflowers Hike *Lafferty Ranch*
- 4/21 Family Wildflower Hike *Bohemia Ecological Preserve*
- 4/25 Grass Blast Kick-Off *Ocean Song/Myers Preserve*
- 4/27 Mid-Spring Exploration Hike *Lafferty Ranch*
Vamos Afuera: La Asombrosa Agua Reciclada con Sonoma Water

MAY

- 5/2 Grass Blast *Ocean Song/Myers Preserve*
- 5/3 Tend the Land Together *Ocean Song/Myers Preserve*
Sudden Oak Death (SOD) Community Science Blitz *Grove of Old Trees*
- 5/4 Sudden Oak Death Bio Blitz *Ocean Song/Myers Preserve*
The Get Outside Book Club featuring *The Last Fire Season* by Manjula Martin *Riddell Preserve*
- 5/7 Farming for Health/ Cosechando para la Salud *Bayer Farm*
- 5/9 Tend the Land Together *Ocean Song/Myers Preserve*
- 5/11 Forest Bathing Hike w/Sierra Wagner *Healdsburg Ridge*
- 5/16 Tend Trails *Grove of Old Trees*
- 5/18 Bio Blitz *Bohemia Ecological Preserve*
- 5/19 Family Wildflower Walk *Bohemia Ecological Preserve*
- 5/25 Late Spring Hike *Lafferty Ranch*
Wildlife Camera Volunteer Training *Riddell Preserve*



JUNE

- 6/1&2 Vamos Afuera: Acampar en Parque Regional Gualala
- 6/1 Bio Blitz *Ocean Song/Myers Preserve*
- 6/4 Tend Trails in the Redwoods *Grove of Old Trees*
Farming for Health/ Cosechando para la Salud *Bayer Farm*
- 6/7 Tend the Land Together *Ocean Song/Myers Preserve*
- 6/8 Branch Out with Birding. Collab with Feminist Bird Club (LGBTQ+ and allies) *TBD*
- 6/10–13 Russian River Teen Trek
- 6/12 Let's Read Outside Summer Kick-Off *Jeff's Garden, Andy's Unity Park*
- 6/14 Seasonal Volunteer Stewardship Day *Riddell Preserve*
Let's Read Outside Summer Kick-Off *Bayer Farm*
- 6/15 **Vamos Afuera 15th Anniversary Celebration *Rancho Mark West***
Out with the Barbed Goat Grass! *Bohemia Ecological Preserve*
- 6/22 Vamos Afuera: Invertebrados Increíbles con Sonoma Water
Seasonal Volunteer Stewardship Day *Fitch Mountain*
Out with the Barbed Goat Grass! *Bohemia Ecological Preserve*
Learn to Classify Wildlife Camera Photos *LandPaths' Office*
- 6/23 Forest Therapy Walk *Bohemia Ecological Preserve*
- 6/29 Vamos Afuera: caminata al atardecer *Rancho Lafferty*

Note: Most volunteer stewardship days start at 9am – check out the event registration page to find out the exact time. Times for outings and other events vary.

GO TO OUR CALENDAR





JULY

- 7/1-5 Camp Trillium, LGBTQ+ and allies nature camp
- 7/1-4 Paddle with Pride, Teen River Trek on the Russian River (LGBTQ+ and allies)
- 7/2 Farming for Health/Cosechando para la Salud *Bayer Farm*
- 7/12 Seasonal Volunteer Stewardship Day *Riddell Preserve*
- 7/13 Goodbye Yellow Star Thistle *Bohemia Ecological Preserve*
- 7/19 Summer Stewardship Day *Fitch Mountain*
- 7/20 The Get Outside Book Club, featuring *Tales of the Urban Wild: A Puma's Journey* by Tiffany Yap and Meital Smith *Lafferty Ranch*
- 7/20 Goodbye Yellow Star Thistle *Bohemia Ecological Preserve*
- 7/27 Goodbye Yellow Star Thistle *Bohemia Ecological Preserve*

AUGUST

- 8/2 Mid-Summer Volunteer Stewardship Day *Ocean Song Myers/Preserve*
- 8/3 Tend Trails in the Redwoods *Grove of Old Trees*
- 8/9 Mid-Summer Volunteer Stewardship Day *Riddell Preserve*
- 8/10 Goodbye Yellow Star Thistle *Bohemia Ecological Preserve*
- 8/17 Tending Together for Healthy Grasslands *Bohemia Ecological Preserve*

GO TO OUR CALENDAR



The library celebrates our partnership with 



SONOMA COUNTY LIBRARY BIBLIOTECA

    sonomalibrary.org

Branch Out with ...




Spring



2024

SAT 3/30	Burn Piles Riddell Preserve, Healdsburg 
SAT 4/6	Wildflower Hike Riddell Preserve, Healdsburg in partnership with Positive Images 
SAT 4/20	Nature-Voguing Myers Preserve (next to Ocean Song) Occidental 
SAT 6/8	Birding on the Sonoma Coast in partnership with the Feminist Bird Club 

LandPaths' Branch Out series centers LGBTQ+ community members with the purpose of creating a sense of belonging & welcoming, inclusive spaces in the outdoors. Allies are welcomed!



HAPPINESS IS... A VISIT TO THE SCHULZ MUSEUM!

Share the joy of Snoopy and the *Peanuts* Gang!
See what's on view now at schulzmuseum.org

CHARLES M.

SCHULZ

MUSEUM

2301 Hardies Lane
Santa Rosa, California 95403
(707) 579-4452

©PNTS



TENDING TOGETHER: COMMUNITY STEWARDSHIP AND YOU

Tending the land with like-minded people has many positive benefits! At

LandPaths, we say community stewardship because the cultivating health of the land, and in turn humanity, takes all of us.

In the face of climate-change related disruptions, connecting with and caring for nature is a way to combat despair and feel joy in community.

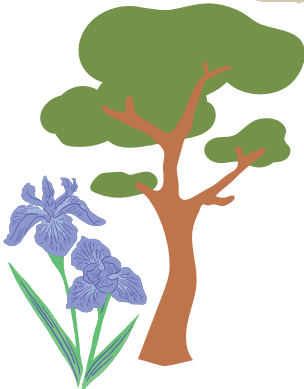


HERE ARE FIVE WAYS TO TEND THE LAND IN A MEANINGFUL WAY WITH US!



1 Care for the Land through Forestry

Forestry is key to tending the land. Partially due to the suppression of Indigenous stewardship and cultural burning, local forests are overgrown. This can lead to more powerful wildfires and the crowding out of native plants and grasses. **Help create balance within the forest by removing "ladder fuels" and joining us for pile burn days this spring! See Calendar for dates!**



2 Care for Native Plants

Plants have adapted to their local habitat over generations. They provide food, shelter, and habitat for insects, and animals along with a host of other benefits. In today's ecosystem, native plants are often crowded out by invasives such as Yellow Star Thistle.

By making volunteer stewardship a habit, you can help native species thrive. Check out our Calendar for upcoming opportunities to remove Yellow Star Thistle, Spurge, and Barbed Goat Grass!

3 Care for Waterways

Streams are more than just beautiful places to view salamanders, western azalea, and fern-laden banks; they are essential parts of the watershed. Think of them like the veins and capillaries in the circulatory system of the land. **Join us this spring and summer for volunteer stewardship days focused on mitigating erosion and keeping our streams healthy!**



Riparian zones, or areas, are lands that occur along the edges of rivers, streams, lakes, and other water bodies. Examples include streambanks, riverbanks, and flood plains.



“It felt nice making a difference in the community that I grew up in and LandPaths’ staff are always supportive and friendly. I highly recommend joining in, whether it be to remove invasive species from a forest, build an accessible trail, or participate in a controlled burn pile.”

-Andrew, LandPaths’ volunteer

4 Care for Trails

Trails are invitations to access nature, drawing attention to way that the land changes with the seasons. And they create space for wildlife to thrive in areas surrounding the trail. When maintaining or creating new trails, LandPaths accounts for people, wildlife, and habitat. Interested in seeing how trails function and how they are maintained? **Come on out for a volunteer stewardship day focused on trails in 2024!**

5 Care for the Land with Fire



Fire is a fundamental element of nature. Across Sonoma County, the Southern Pomo, Coast Miwok, and Mishewal Wappo peoples use prescribed fire, or ‘good fire,’ for ecological and cultural purposes. These practices go back tens of thousands of years. In recent history this practice was outlawed by the Federal Government, resulting in a buildup of fire-prone fuels. At LandPaths, we view the reintroduction of good fire as a primary ecological goal for stewardship. **Participate by joining us for a pile burn day out on the land this spring or fall!**





SUMMER *in the gardens*

Bayer Farm began as a dream that the communities of southwest Santa Rosa might have a place to connect with nature and find refuge from city life. In 2007, LandPaths' staff broke ground and planted the first seeds on a plot of land owned by the City of Santa Rosa. A little over a decade later, the Moorland community asked for something similar, and thus Jeff Bodwin Community Garden was born, in partnership with Sonoma County Regional Parks.

Both gardens are now thriving community hubs where people grow food, meet for potlucks, and families read, laugh, make art, and garden together. Local schools, from preschool to high school levels, utilize the garden for environmental education and inspiration for future earth stewards.

Here are a few ways to get involved at LandPaths' community gardens in 2024!

- **Participate in a drop-in gardening day.** Days and times listed in the sidebar!
- **Join the Harvesters at Bayer Farm** – our wonderful volunteer harvesters collect food from the teaching garden and offer it to the public from the farm stand on Wednesdays.
- **Have children under the age of 17? Join us for the Free Summer Lunch program** from June 3–August 9 from 11am–12pm. In partnership with Redwood Empire Food Bank, all youth up to age 17 can pick up a balanced lunch. Feel free to stay and eat at the picnic tables!



- After lunch, stay for **Let's Read Outside** with LandPaths' and guest readers and fun and free art activities!
- More than 100 families grow fresh food in their own family plots at the gardens. Plot adoption agreements are signed in October – **ask us how you can get started growing food with us!**
- **Learn about herbs and plants in the garden and how to prepare them with Farming for Health.** First Tuesdays of the month, 10am–11:30am.

For more information about how to get involved at the gardens, give us a call at (707) 544-7284 or email outings@landpaths.org.

DROP-IN GARDENING DAYS –
Everyone is welcome! Please bring garden gloves, if you have them, water, and snacks. We'll provide the tools and everything else you need to be successful!

Jeff Bodwin Community Garden
3399 Moorland Avenue,
Santa Rosa
Tuesdays & Thursdays,
10am–4pm
2nd Saturday of the month,
9am–12pm

Bayer Farm
1550 West Avenue, Santa Rosa
Wednesdays & Fridays,
10am–4pm
3rd Saturday of the month,
9am–12pm

Thanks to these partners for making the programming at the gardens possible:



Vamos Afuera 15th ANNIVERSARY



FOLLOW VAMOS AFUERA
CON LANDPATHS
ON FACEBOOK AND
INSTAGRAM AND
FIND OUT WHAT'S
NEW AND WHAT YOU
CAN SIGN UP FOR!

THANK YOU TO THE
FOLLOWING PEOPLE
AND ORGANIZATIONS
FOR HELPING TO
MAKE VAMOS AFUERA
WHAT IT IS TODAY:

GUADALUPE CASCO

OMAR GALLARDO

MAGDALENA R. MCQUILLA



Vamos Afuera con LandPaths began 15 years ago to connect Spanish speaking communities with beautiful open spaces. "It really was an effort to connect people with open spaces and deepen their relationships," says Magdalena Ridley McQuilla, who launched the program. It all began with a simple outing to Taylor Mountain, where a few families enjoyed a picnic and sweeping views of Santa Rosa and beyond.

A couple of years later, Omar Gallardo took over, expanding into camp outs at Gualala, Point Reyes, and Yosemite, community-building adventures, partnerships with Sonoma Water and others to expand educational outings, culturally relevant events, and opportunities to care for the land.

Bayer Farm was important to this growth. "It was a portal to LandPaths' other preserves and beyond, and an opportunity to develop connections with land and develop love for that land," says Omar. While bilingual programming is super important and to be valued, Vamos Afuera is run entirely in Spanish, so that native speakers can engage with nature and each other in a way that feels comfortable, safe, and eliminates the barrier of translation.

This year, we celebrate the 15th birthday of Vamos Afuera. Check out our Calendar for upcoming Vamos Afuera outings on kayaks and on land. To learn more, please contact Miranda Carreño at (707) 544-7284 ext. 114 or miranda@landpaths.org.



LANDPATHS IS AN ORGANIZATION THAT CONTRIBUTES A LOT TO OUR COMMUNITY BY HELPING US VALUE NATURE AND REMINDING US THAT WE ARE PART OF IT. ”

Naya Barretto, Vamos Afuera participant and volunteer outings leader

**You're invited to
celebrate Vamos Afuera's
15th anniversary on June 15
at Rancho Mark West!**

Contact Miranda Carreño at miranda@landpaths.org to learn more, or go to our Calendar to save your spot!



SAVE THE DATE



Harvest Festival
Saturday, September 28, 2024
LandPaths' Bayer Farm
Santa Rosa, California



7 EASY WAYS TO connect kids with nature



DO A SCAVENGER HUNT SOLO OR WITH A GROUP OF FRIENDS. USE A FIELD JOURNAL OR TAKE PICTURES OF THE LISTED ITEMS, SO AS NOT TO TAKE ANYTHING FROM PARKS/PRESERVES. AT THE END OF THE SCAVENGER HUNT, INCLUDE A FUN PRIZE!

—JACKIE PENA

FIND THE CLOSEST BODY OF WATER AND EXPLORE TOGETHER. FROM SWIMMING IN THE OCEAN TO WALKING ALONG THE COAST, FAMILY BEACH DAYS PLAYED A PIVOTAL ROLE IN MY CHOICE TO PURSUE A DEGREE IN MARINE SCIENCE!

—C.J. KOW

PLAN A GAME DAY USING ONLY THE NATURAL ENVIRONMENT. GROWING UP, MY FAVORITE WAS AN OBSTACLE COURSE, BUT I'M ALWAYS AMAZED AT WHAT KIDS COME UP WITH WHEN GIVEN TIME AND SPACE IN NATURE.

—REBECCA CARRILLO STEINRUECK

GRAB A FEW PAINT SWATCHES FROM YOUR LOCAL HARDWARE STORE. HEAD OUT TO A LOCAL PARK, A WALK AROUND THE NEIGHBORHOOD, OR EVEN YOUR BACKYARD. TRY TO MATCH THE SWATCH COLORS WITH SOMETHING IN NATURE! SOMETIMES IT'S EASY AND SOMETIMES IT'S TOUGH, BUT THAT'S WHAT MAKES IT SUCH A BLAST!

—CHRISTIE CLARK

Nature camp offers opportunities to connect with nature and **FOSTER A LOVE OF THE LAND**, which we know is critical for young people (and all people!). But camp isn't the only place where this magic happens – these opportunities are everywhere, if you're willing to slow down and get your hands (and feet) a little dirty. We asked our amazing youth team to share their best ideas for getting outside with kids in beautiful Sonoma County.

CHOOSE A PARK OR OPEN SPACE WITH SAFE ACCESS TO A STREAM OR OAK TREES WITH LOW BRANCHES. BRING ALONG A CLEAN YOGURT CONTAINER TO SAFELY HOLD ANY CRITTERS YOU FIND. TAKE CARE TO TREAT THEM CAREFULLY, AND RETURN THEM TO THEIR HOMES AFTER OBSERVING THEM.

—JESSICA HOLLOWAY

COMPILE A LIST OF ADJECTIVES LIKE SMOOTH, MULTI-COLORED, FLEXIBLE, LOUD, STINKY, ETC. START YOUR ADVENTURE! THIS CAN BE DONE IN A BACKYARD, FRONT YARD, PARK, OR A LARGER PRESERVE. TURN YOUR OUTDOOR STROLL INTO A MISSION TO DISCOVER NEW SENSATIONS IN NATURE!

—MINEAUX HORNERGER

AT BAYER FARM STUDENTS GET EXCITED TO SEE PRODUCE THEIR FAMILIAS USE AT HOME AND I SEE THEIR FACES LIGHT UP AS THEY SAY, "I AM GOING TO BRING THESE CHILES OR ELOTES TO MY MOM!" I INVITE YOU TAKE YOUR FAMILIA TO EXPLORE A COMMUNITY GARDEN AND TRY THINGS TOGETHER (JUST ASK BEFORE YOU HARVEST)!

— LESLY CABALLERO



camp matters



donate
today!

Our 2024 Camps Campaign is on through May 1st!

OUR GOAL IS TO RAISE \$200,000 BY MAY 1ST.

The first \$35,000 donated to our Camps Campaign will be matched in memory of Julia Rose Coughlan.

Look down!

WILD TREASURES OF THE FOREST FLOOR

Keep your attention on the ground this season and your curiosity will be rewarded. The five species listed below are only the beginning of your forest floor adventure. Sign up for an outing or volunteer stewardship day to see these magical and mesmerizing plants, plus many more, with your own eyes!



Woodland Strawberry

Fragaria vesca

FAMILY: Rose

HABITAT: Partly shady woodland and forest

SPOTTED AT: Rancho Mark West, Riddell, Bohemia

HOW COOL IS THIS? The fruit of the wild strawberry is small but flavorful and the flowers are loved by pollinators, especially bees.



California Maidenhair Fern

Adiantum jordanii

FAMILY: Pteridaceae

HABITAT: Woodlands with moist, well-drained sand, loam, or limestone.

SPOTTED AT: Bohemia, Ocean Song/Myers, Grove of Old Trees, Riddell Preserve

HOW COOL IS THIS? Fossil records for ferns like this date back almost 400 million years. Which means that looking at these ferns on the forest floor is kind of like stepping back in time to the age of the dinosaurs!

Diogenes' Lanterns

Calochortus amabilis

FAMILY: Liliaceae

HABITAT: A scrub and woodland flora, it's usually found on dry slopes on the understory of oak woodlands or chaparral.

SPOTTED AT: Riddell, Bohemia

HOW COOL IS THIS? The bulbs of the plant are a traditional food of the Kashaya Pomo. The bulbs can be baked or boiled and eaten like a potato (please don't try this at home before consulting an edible foods expert!)



California Buttercups

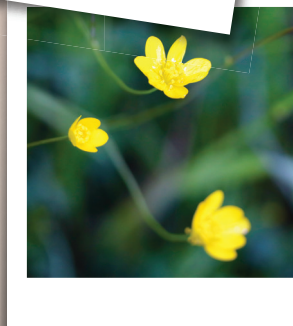
Ranunculus californicus

FAMILY: This one's easy...Buttercup!

HABITAT: Look for it among grasses in sunny, open areas and in woodlands along creeks with dappled shade.

SPOTTED AT: Riddell, Bohemia, Ocean Song

HOW COOL IS THIS? A food source for the Coast Miwok, the seeds can be roasted, dried, and ground into a flour for porridge or cakes.



California Fescue

Festuca californica

FAMILY: Poaceae

HABITAT: Most frequently found in partial shade, along the borders of woods, and north-facing slopes. Sometimes found in moist soils along stream banks and in serpentine soils.

SPOTTED AT: Bohemia, Ocean Song/Myers, Riddell Preserve, Rancho Mark West

HOW COOL IS THIS? A wildlife super plant, according to landscape designer Cheryl Lisin, California fescue hosts at least eight species of moths and butterflies.



so many ways to

PARTICIPATE!



Root your child in nature with a **CAMP, TEEN TREK, or SCHOOL PROGRAM.**

VOLUNTEER at Owl Camp, Camp Trillium, Teen River Trek, or Paddle with Pride.

Care for the land and connect with community on a volunteer **STEWARDSHIP DAY.**

Sign up for an **OUTING** in English or Spanish.

Become a **GARDENER** at Bayer Farm or Jeff Bodwin Community Garden.

Between the age of 16–20? Gain hands-on work experience as a **YOUNG STEWARD.**

Connect people with the land as a LandPaths' **DOCENT.**

PARTNER with us through your district, business, or community organization.

Explore more at **LANDPATHS.ORG!**



Explore today!
Explórala hoy mismo!



AG +
OPEN
SPACE
SONOMA COUNTY

LAND FOR LIFE

Join a
bilingual outing
Únete a una
excursión bilingüe



Nature is
here for you.

La naturaleza
está aquí para ti.

www.SonomaOpenSpace.org

